

The British and Irish Lions' Tour to New Zealand 2005

Exclusive to Gullivers' clients

OPTIONAL

Adventures



Official Travel Agent for the British and Irish Lions' Tour to New Zealand 2005

Welcome to Optional Adventures

TO ENSURE you enjoy the trip of a lifetime, we have compiled this exclusive Optional Adventures brochure to allow you to pre-book and purchase a variety of exciting events and sightseeing options in New Zealand and the stopover destinations. Some of these, like the "must-do" Pub Crawl with Altitude, have been put together especially for Gullivers' clients so are otherwise not available to the public.

You will, of course, find plenty of sightseeing options available via the concierge at your hotels or the Tours Desk on Pacific Sky but we know that our supporters like to have one or two additional selected trips organised before they leave home. Booking your trips now means you are likely to know other members of the sightseeing party and you will receive a good rate through our well-established contacts.

We have tailor-made our sightseeing and events to portray the best of New Zealand's famous 'Lord of the Rings' scenery and to appeal to the interests of Lions supporters. So how does a scenic helicopter flight to the spur of the Remarkables, offering spectacular views of the Southern Alps, sound? Or if you are looking for an even greater adrenalin rush, then jump off the Sky Tower, the tallest building in the Southern Hemisphere. For an insight into New Zealand's rugby culture then get to grips with the fearsome Haka in a training session with Maori Warriors. And for tales from past Lions tours, an evening of entertainment with Martin Johnson and fellow celebrities is not to be missed.

Whatever sightseeing and events you choose, we are sure they will contribute to making your Lions tour truly memorable!

Contents

PAGE

- 2 ADVENTURES IN NEW ZEALAND
Upgrade to Full Hospitality | Rotorua
- 3 Queenstown | Christchurch
- 4 Wellington | Pacific Sky Options
- 5 Auckland
- 6 STOPOVER ADVENTURES
Bangkok | Fiji | Hawaii | Hong Kong
- 7 Raratonga | Seoul | Singapore | Sydney

Adventures in New Zealand

UPGRADE TO FULL HOSPITALITY AT EACH TEST MATCH



FOR JUST £139 per person, you can enjoy full hospitality at official NZRU venues and the guarantee of a lateral match ticket.

In addition to lateral match ticket, the cost

Booking Ref	UPGRADE
Date	25 June Christchurch, 2 July Wellington or 9 July Auckland
Duration	Two hours pre and two hours post-match (each kick off is at 1910 hours).
Suitable for	All tours except Midi available 25 June only and Duo Test available 2 July and 9 July.
Cost	£139 per person
Cost includes	Lateral match tickets, four course dinner, complimentary drinks, celebrity speakers, live band, match programme.

includes premium four course dinner, complimentary drinks all evening, celebrity guest speakers – former All Blacks and Lions, live band, match day programme and large screen for replay.

Details of exact NZRU official hospitality locations for each Test to be confirmed.

The Gullivers Big Pub is also an official NZRU operation and includes welcome drink and light meal. The upgrade to full hospitality is considerable. Please note that you can only do one or the other, not both.

Rotorua

HELL'S GATE THERMAL RESERVE AND WAI ORA SPA



Hell's Gate Thermal Reserve is a 20 acre spectacular collection of exploding waters, bubbling mud pools, hot water lakes, sulphur crystal formations, the largest hot waterfall in the Southern Hemisphere and New Zealand's only mud volcano.

The tour starts with a traditional Maori welcome and you are then guided around New Zealand's most active geothermal reserve. The Maori people have been bathing in these muds and waters for over 700 years and swear by their healing properties.

Guests may indulge in a geothermal mud bath in the Wai Ora Spa and Wellness Centre followed by a pure sulphurous spa, complete with hot waterfalls. Following the spa treatment, you can enjoy a half hour full body massage, incorporating elements of Miri Miri (Maori massage) techniques. Finally, visitors are invited to participate in a Haka training session with Maori Warriors and then relax with Manuka tea served in a private lounge.

Booking Ref	ROTHEL
Duration	Half day, 4 hours
Date	5 June, and 4 or 5 July
Departure	9:00am or 1:00pm
Suitable for	Epics 1, 2, 3, 5 & 6 TTH3, TTH4, TTH10, TIGERS 1, TIGERS 2, TTH15, TTH17, TTH19, TTH24, TTH27, TTH28
Cost	£65 per person with massage £56 per person without massage
Cost includes	Return transfers from your hotel in Rotorua, fully guided tour of geothermal reserve, mud bath, spa, half hour full body massage and Haka training session.
Please note	You will need to bring a swimming costume.



TAMAKI MAORI CONCERT AND HANGI

The Tamaki Maori Village Experience leads visitors back to pre-European times. During the short transfer from your hotel, your driver guide explains the protocols and traditions you will experience and helps you elect a chief to represent your group. A traditional Powhiri (welcome ceremony) awaits you that includes Te Wero (the challenge) and Te Karanga (the call of welcome), before you enter a forest canopy and find a pre-European style village alive with people. A cultural performance including the Haka (war dance) follows in the meeting house and guests are then led into the wharekai (dining room) for a traditional Hangi meal slowly cooked in earthen ovens. Finally you have the opportunity to shop in a traditional marketplace before returning to your hotel.

Booking Ref	ROTTAM
Duration	Half day, 3.5 hours
Date	5 or 13 June or 4 July
Departure	5:30pm
Suitable for	Epics 1, 2, 3, 5 & 6, TTH3, TTH4, TTH10, TIGERS 1, TIGERS 2, TTH15, TTH17, TTH19, TTH24, TTH27, TTH28
Cost	£35 per person
Cost includes	Return transfers from your hotel, fully guided tour and traditional Hangi meal.

These two Rotorua options are available together as a full day excursion from Auckland. See page 5



Queenstown

MILFORD SOUND



Set in three million acres of Fiordland National Park, Milford Sound is arguably the most scenic destination in New Zealand. It offers a truly breathtaking display of magnificent untouched native forests and bush, pristine waterways and lakes, glaciers and high peaks.

Make the most of the scenic drive along the shores of Lake Wakatipu to Te Anau in a luxury glass-roofed coach from Queenstown. There is time for morning tea, photo stops and a short walk along the way. At Milford Sound board a vessel and cruise the full length of Sound to the Tasman Sea whilst enjoying excellent views of the surrounding waterfalls, rainforest, mountains and wildlife. A buffet lunch is included.

Booking ref	ZQNMIL with coach back ZQNMFB with flight back
Duration	Full day, 12 hours with coach back or 8.5 hours with flight back
Date	20 or 28 June or 4 July
Departure	6:55am
Suitable for	Epics 1, 2, 3, 5 & 6 Midi 4 TTH1, TTH2, TTH6, TTH7, TTH9, TTH15, TTH20, TTH21, TTH24, TTH26, TTH29, TTH32, DTH4
Cost	£75 per person plus supplement of £125 for return flight
Cost includes	Return luxury coach transfer from your hotel (or return flight at supplementary cost), scenic cruise through fiord and buffet lunch.
Please note	The optional flight back from Milford to Queenstown is weather dependent and a full refund will be given if weather conditions do not allow it to operate.



SKIING AT CARDRONA



Queenstown is New Zealand's largest ski resort so do not miss your chance to hit the slopes at Cardrona, a 50 minute drive away. Cardrona is situated between Queenstown and Wanaka and with a base elevation of 1670m above sea level it is higher and colder than other local ski areas. Percentages of slopes are as follows: beginners 25%, intermediate 55%, advanced 20%. Cardrona has two Quad chairs, one Quad express chair, three Magic Learner Lifts and one Platter lift.

Booking ref	ZQNSCA
Duration	Full day
Date	Any day except 19, 27 or 29 June and 05 July
Departure	Shuttle buses depart and return throughout the day
Suitable for	Epics 1, 2, 3, 5, 6 Midi 4, TTH1, TTH2, TTH6, TTH7, TTH9, TTH15, TTH20, TTH21, TTH24, TTH26, TTH29, TTH32, TTS15 DTH3 and DTH4
Cost	£65 per person per day – discounted fully inclusive package for Lions supporters.
Cost includes	Skilink mountain transfers to and from your hotel, day lift pass, skis or snowboard and boots, poles, jacket and salopette hire.
Please note	You will need to bring/purchase your own hat, ski gloves, and sunglasses/goggles.
Insurance	Please contact us if you have taken out Gullivers insurance and wish to ski as you will need to add winter sports cover at a supplementary cost.



REMARKABLES HELICOPTER LANDING



An experience of a lifetime! Take a 20 minute helicopter flight to the top of the Remarkables; 1538 metres above Queenstown. Stand on the spur of the Remarkables and take in the most breathtaking views across Lake Wakatipu and the Southern Alps.

Booking ref	ZQNSCE
Duration	1.5 hours including transfers
Date	20 June or 4 July
Departure	8:30am
Suitable for	Epics 1, 2, 3, 5 & 6 Midi 4 TTH1, TTH2, TTH6, TTH20, TTH21, TTH26, TTH29, TTH32 DTH4
Cost	£75 per person
Cost includes	Return transfers from hotel to Queenstown Helipad and Heli landing on the Remarkables.

HELICOPTER GOURMET PUB CRAWL



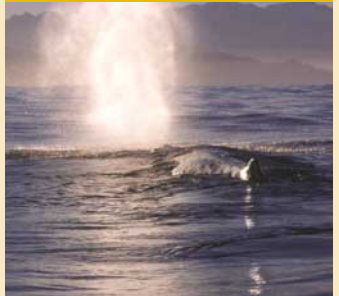
Experience for yourself the majestic scenery of the 'Lord of the Rings'. Flying from Queenstown, you rise to the top of the mighty Remarkables for a fantastic snow landing before heading to one of the region's delightful country pubs and then a winery for a gourmet lunch. After lunch the helicopter takes you for a taste of the local beer at one of New Zealand's oldest pubs, the Cardrona Hotel. Your return flight takes you over the spectacular Crown Range before landing back in Queenstown.

Booking ref	ZQNHLE
Duration	5.5-6 hours
Date	20 June or 4 July
Departure	9:15-9:45am
Suitable for	Epics 1, 2, 3, 5 & 6 Midi 4 TTH1, TTH2, TTH6, TTH20, TTH21, TTH26, TTH29, TTH32 DTH4
Cost	£445 per person
Cost includes	Return transfer from hotel to Queenstown Helipad, Heli landing on the Remarkables, complimentary beer, wine and soft drinks at each venue, fine dining meal matched with selection of local wines and beer and tour guide.
Please note	The helicopter landing on the Remarkables is weather dependent and a full refund is given if the tour is cancelled due to the bad weather. This tour will operate subject to minimum numbers.



Christchurch

WHALE WATCH KAIKOURA



Whale Watch Kaikoura, which has won numerous awards for the quality of its service, operates all year round in purpose designed and built vessels.

The area of Kaikoura is a marine paradise and you spend up to 2.5 hours out on the water which is favoured by sperm whales (up to 20m long), humpback whales and the elusive giant squid. In addition to seeking whales, you are treated to the sight of a variety of birds, penguins, seals, albatross and dolphins. An onboard computer provides you with a virtual tour offering you a better understanding of the geographic history, whale environment and Maori legends of the area.

Booking ref	CHCWH
Duration	Full day, 9.5 hours (transfer time from Christchurch to Kaikoura 3 hours in each direction).
Date	24 or 26 June
Departure	8:00am
Suitable for	All tours except TTH25 and all Duo Test Tours <i>Epic 5, TTH20 and TTH21 have Whale Watch already included in their tour cost. Epic 1, 2 and 3 may choose to do Whale Watch en route from Christchurch to Blenheim on 26 June.</i>
Please note	
Cost	£69 per person
Cost includes	Return transfers from your Christchurch hotel to Kaikoura and fully guided boat trip to view the whales.
Please note	A full refund will be given should poor weather conditions cause the trip to be cancelled. Please bear in mind that sightings are not guaranteed.





Pacific Sky clients only



Napier

Monday 4 July

Once you dock in Napier, shuttle buses are available to take you in and out of the town.

Details of a Hawke's Bay wine trail, including two wine tastings and lunch, will be sent to you separately to book at a later date.

Wellington

BOOMROCK LODGE ACTIVITIES DAY



This is an amazing opportunity to enjoy an extreme location working in harmony with the environment. Boomrock Lodge is an exclusive day retreat, perched on top of 250m cliff tops with stunning scenery overlooking the South Island. A range of exhilarating activities are available including extreme golf, supervised clay-target shooting and archery or you can just soak up the ambience and enjoy the breathtaking views.

The pleasure of the day is enhanced by lunch served with a selection of fine New Zealand wine* and impeccable service. You finish the day with a scenic helicopter flight back to Wellington.

Booking ref	WLGBOO
Duration	Full day, 6.5 hours
Date	01 July
Departure	10:00am
Suitable for	Epics 1, 2, 3, 5 & 6 TTH1, TTH2, TTH3, TTH4, TTH5, TTH8, TTH11, TIGERS 1, TTH13, TIGERS 2, TTH16, TTH17, TTH18, TTH19, TTH23, TTH26, TTH27, TTH28, TTH29 All Tri Test & Duo Test Ship Tours DTH1
Cost	£145 per person
Cost includes	One way coach transfer from your hotel to Boomrock and return by helicopter to Wellington, nibbles and soft drinks (*alcohol is available to purchase separately), lunch and use of all extreme sporting facilities.

LIONS WALKING GOURMET TOUR

If you love to explore new places through food and wine then this is for you. Wellington regards itself as New Zealand's café capital and it is well suited to a walking tour. On this gourmet Zest Food Tour you meet the city's vibrant food professionals and hear about its food stories as you walk. Your senses are seduced by a special hands-on boutique coffee roasting experience and a visit to the exclusive store where real Wellington foodies and chefs shop. The tour culminates with a Tasting Lunch at Nikau Café or Logan-Brown restaurant where the owners and/or chefs introduce their food and regional wine matches.

Booking ref	WLGGOU
Duration	Half day, 4 hours
Date	13, 14, 29 or 30 June and 01 July
Departure	10:30am
Suitable for	Epics 1, 2, 3, 5 & 6 TTH1, TTH2, TTH3, TTH4, TTH5, TTH8, TTH11, TIGERS 1, TTH13, TIGERS 2, TTH16, TTH17, TTH18, TTH19, TTH23, TTH26, TTH27, TTH28, TTH29 All Tri Test Ship tours DTH1 All Duo Test Ship Tours
Cost	£89 per person
Cost includes	All product tasting and lunch at Nikau Café or Logan Brown Restaurant.



LIONS SUPPORTERS PUB CRAWL



Enjoy some of Wellington's oldest, most famous and scenic pubs on this exclusive pub crawl.

Begin at the Brewery Bar and Restaurant on the Waterfront and watch your favourite beer being brewed before your eyes. From here, drive to the Realm in Hataitai for a drink. This is a suburban pub frequented by local sportsmen where you will have the chance to pull your own pint. Then, after a short scenic coastal drive, drop in at The Pines in Houghton Bay where a finger buffet lunch is laid on for you.

From here, head back into town driving past the infamous Old Athletic Park, the home of rugby in Wellington until 1999 when the Westpac Stadium (or 'cake tin') was opened. You will be dropped at The Malt House to sample their beers brewed on site. Then it's on to New Zealand's oldest hotel, the Shepherd's Arms, in the heart of vibrant Thorndon. The Prime Minister's residence is just down the road but is not included in the pub crawl!

Another walk now leads you to the Backbencher Bar and Café where the theme is aptly political satire. Next is a short walk to the Thistle Inn, one of New Zealand's oldest pubs – great Maori chiefs used to paddle right up to the bar in their waka canoes and have a pint with the Governor-General.

And, finally, you finish back in the Waterfront at the Brewery Bar and Restaurant.

On 30 June, you can go on to Basin Reserve to watch the Gullivers Barbarians in action.

Booking ref	WLG PUB
Duration	Full day, 5.5 hours
Date	14, 29, 30 June or 01 July
Departure	11:00 am
Suitable for	Epics 1, 2, 3, 5 & 6 TTH1, TTH2, TTH3, TTH4, TTH5, TTH8, TTH11, TIGERS 1, TTH13, TIGERS 2, TTH16, TTH17, TTH18, TTH19, TTH23, TTH26, TTH27, TTH28, TTH29 All Tri Test and Duo Test Ship tours DTH1
Cost	£49 per person
Cost includes	Coach transfers from pub to pub where required; the equivalent of one pint of beer or one glass of house wine at each pub and finger buffet lunch. The pub crawl is accompanied by a ground agent representative.

MARTIN JOHNSON TESTIMONIAL DINNER



This is a great opportunity to spend an evening with the legendary former Lions captain, Martin Johnson, and a line-up of other celebrities. Martin is appearing at a series of events throughout the world during his testimonial year and in New Zealand these take the form of a three course dinner and drinks accompanied by a fantastic night's entertainment. A share of the proceeds goes to Macmillan Cancer Relief, Sport Aiding Medical Research for Kids and the National Society for the Prevention of Cruelty to Children.

Booking ref	WLGTES
Duration	5.5 hours
Date	01 July
Start time	6:30pm
Location	Wellington Events Centre
Suitable for	Epics 1, 2, 3, 5 & 6 TTH1, TTH2, TTH3, TTH4, TTH5, TTH8, TTH11, TIGERS 1, TTH13, TIGERS 2, TTH16, TTH17, TTH18, TTH19, TTH23, TTH26, TTH27, TTH28, TTH29 All Tri Test Ship DTH1, and all DTS tours
Cost	£71 per person
Cost includes	Three course dinner, unlimited beverages of beer, wine and soft drinks for the evening and entertainment.
Please note	Return your booking form and payment as soon as possible if you are interested as numbers are limited. Make your own way to and from Wellington Events Centre.

Roaring Lions Referees

If you have ever wanted to gain an official RFU accreditation as a qualified rugby referee then now's your chance. Murray Felstead, a member of the RFU's Referee Training Team, offered courses during Rugby World Cup 2003 and is doing so again on Pacific Sky during the Lions.

Some "surprise" guests including Jason Leonard have promised to attend when subjects such as scrummaging and the lineout are dealt with.

If you are interested then please register with Murray direct – a separate booking form is enclosed.

Booking ref	REFEREE
Duration	6 hours (two 3 hour sessions or three 2 hour sessions)
Date	Sun 26 June, Thu 30 June, Tue 05 July on board Pacific Sky
Suitable for	Tri Test Ship and Duo Test Ship Tours
Cost	£35 per person
Cost includes	Accredited RFU course, pack of RFU publications on the game, an IRB Law Book, all to be dispatched prior to departure from the UK. Accreditations and badges issued from the RFU on return to the UK.

Lions Cruise Taster

26/28 June (2 nights)

Christchurch-Picton-Wellington

03/06 July (3 nights)

Wellington-Napier-Auckland

For clients taking a hotel based package this is an unique opportunity to enjoy a couple of nights on board Pacific Sky, our floating rugby club, as it cruises up the east coast of New Zealand.

Enjoy all meals plus a superb five course dinner each evening and a full entertainment programme tailored specifically to the rugby supporter and hosted by Gareth Chilcott. There will be comic nights, rugby forums and match analysis, sports quizzes, match re-plays and rugby celebrity nights. The atmosphere on board is sure to be unforgettable – a one off experience not to be missed!

Entrance to our Gullivers Marlborough Wine Festival in Blenheim near Picton is included on 27 June including wine tasting and lunch.

Please contact the Lions Department for further details and prices.



Auckland

HELL'S GATE THERMAL RESERVE & WAI ORA SPA plus TAMAKI MAORI CONCERT & HANGI

Hell's Gate Thermal Reserve is a 20 acre spectacular collection of exploding waters, bubbling mud pools, hot water lakes, sulphur crystal formations, the largest hot waterfall in the Southern Hemisphere and New Zealand's only mud volcano.

The tour starts with a traditional Maori welcome and you are then guided around New Zealand's most active geothermal reserve. The Maori people have been bathing in these muds and waters for over 700 years and swear by their healing properties.

Guests may indulge in a geothermal mud bath in the Wai Ora Spa and Wellness Centre followed by a pure sulphurous spa, complete with hot waterfalls. Following the spa treatment, you can enjoy a half hour full body massage, incorporating elements of Miri Miri (Maori massage) techniques. Finally, visitors are invited to participate in a Haka training session with Maori Warriors and then relax with Manuka tea served in the private lounge.

You will then be collected and taken to the Tamaki Maori Village. During your 15 minute journey south of Rotorua, your driver guide explains the protocols and traditions you will experience and helps you to elect a chief to represent your group. A traditional Powhiri (welcome ceremony) awaits you that includes Te Wero (the challenge) and Te Karanga (the call of welcome), before you enter a forest canopy and find a pre-European style village alive with people. A cultural performance



including the Haka (war dance) follows in the meeting house and guests are then led into the wharekai (dining room) for a traditional Hangi meal slowly cooked in earthen ovens. Finally you have the opportunity to shop in a traditional marketplace before returning to Auckland.

Booking ref	ROTHAT
Duration	Full day, 14.5 hours (transfer time from Auckland to Rotorua is approximately 3 hours in each direction)
Date	07 July
Departure	9:00am
Suitable for	All tours except Midi 4
Cost	£135 per person with massage £126 per person without massage
Cost includes	Return transfers from your Auckland hotel to Rotorua, fully guided tour of geothermal reserve, mud bath, spa, half hour full body massage and Haka training session. Fully guided tour of Tamaki Maori Village and traditional Hangi meal.

MARTIN JOHNSON TESTIMONIAL DINNER

If you missed this opportunity in Wellington (page 4), then this is your last chance whilst in New Zealand to spend an evening with the legendary former Lions captain, Martin Johnson, and a line-up of other celebrities.

Booking ref	AKLLES
Duration	5.5 hours
Date	6 July
Start Time	6:30pm
Location	Hyatt Regency Auckland
Suitable for	All tours except Midi 4
Cost	£97 per person
Cost includes	Three course dinner, unlimited beverages of beer, wine and soft drinks for the evening and entertainment.
Please note	Return your booking form and payment as soon as possible if you are interested as numbers are limited. Make your own way to and from the Hyatt Regency Hotel.

WINE TRAIL TOUR



Entrust yourself to one of Auckland's most experienced specialist wine guides and enjoy tasting the best of New Zealand wine at some of the Auckland region's finest wineries. The scenic countryside and lunch at a beautiful country location further enhance your half day out. The tour additionally takes you to Muriwai Beach which has spectacular views out to the Tasman Sea and a gannet colony.

Booking ref	AKLWIN
Duration	Half day, 5.5 hours
Date	6, 7 or 8 July
Departure	9:30am
Suitable for	All tours, except Midi 4
Cost	£75 per person
Cost includes	Return transfers from your hotel, wine tasting at three wineries and lunch.
Please note	Venues are dependent on numbers.

PUB CRAWL WITH ALTITUDE



Our helicopter pub crawls were a huge success at Rugby World Cup 2003 and are back by popular demand.

Take off from downtown Auckland at Mechanic's Bay Helipad; fly over the city centre and the hallowed turf of Eden Park to indulge in the atmosphere of one of the best rural pubs in the region, the Hunting Lodge. Minibus to one of Auckland's most exclusive wineries for lunch, the Matua Valley Winery. You then fly over Waitemata Harbour and the northern beaches to Waiheke Island. Relax at the Harbourmaster's bar for your last drink before returning to Auckland by ferry at your leisure. Option to fly back from Waiheke Island instead of ferry.

Booking ref	AKLHEL
Duration	5-5.5 hours
Date	4, 5, 6 or 7 July
Departure	11:00am
Suitable for	All tours except Midi 4
Cost	£369 per person Supplement of £59 for return flight instead of ferry
Cost includes	Transfer from hotel to Helipad, complimentary wine, beer and soft drinks at each venue, fine dining lunch accompanied by New Zealand's finest wine and beer, ferry transfer back to downtown Auckland and tour guides.



SKY JUMP



The Sky Tower is the tallest building in the Southern Hemisphere at 192 metres (630 feet) and it offers New Zealand's highest tower jump for those with the nerve. Fall at approximately 75 kilometres per hour for around 16 seconds before slowing in the last few metres to land safely on the landing platform – the ground rush is unbeatable.

Not a bungee, this is a whole new way to fall off things! New dimensions of comfort and safety are added to the experience as you will not be hanging upside down or bouncing around. Sky Jump is approved by OSH as a registered amusement device and Qualmark endorsed. All guides are certified to the highest relevant standards and all equipment is supplied. No experience necessary.

See why Tom Cruise and friends had to do it – twice!

Booking ref	AKLSKY
Duration	One hour (actual falling time is 16 seconds)
Date	7, 8, 9 or 10 July
Departure	Jumps scheduled at 10:00am or 11:00am
Suitable for	All tours except Midi 4
Cost	£65 per person

IMPORTANT NOTE

PICK UP POINTS Pick up points will be advised on your voucher (sent to you with final documents). Please note that in some instances you will be required to make your own way to a central meeting point from where the whole group will leave for the excursion (ie pick-ups are not necessarily from your hotel). Meeting points will be decided when numbers for each excursion are known.

Avoid Roaming Rage!

Avoid all mobile roaming charges while in New Zealand
Buy a pre-paid foreign SIM card from 0044.co.uk
Save up to 80% on your call charges

- Calls from 18p per min
- All incoming calls are FREE
- Your new number before you travel
- Includes initial calling credit
- English user guides
- Free handset unlocking
- From £29.99 including FREE UK delivery
- Easy to use pay-as-you-go system

0044
double zero | double four

For further information and to purchase your pre-paid SIM card visit our website at: www.0044.co.uk
Or call us on: 0870 9500044 Or email us at: info@0044.co.uk

Now you can afford to take your mobile abroad.

PLEASE QUOTE THE FOLLOWING REFERENCE ON ALL ORDERS: LIONS0044

Stopover Adventures

Our main stopovers are **Bangkok, Fiji, Hawaii, Hong Kong, Rarotonga, Seoul, Singapore and Sydney.** The tours in each stopover are listed with their sightseeing options below. If you are visiting a stopover independently and happen to be there on the day a tour is operating, then you are also welcome to book.

Bangkok

RIVER OF KINGS AND THE GRAND PALACE EXCURSION



Depart on a long-tail or express boat and ride along the fascinating River of Kings for a close-up look at the homes, temples, local life and daily activities along the river. You continue past the Temple of Dawn, built in the late 1700s and one of Bangkok's best known landmarks. The central tower is taller than a 20 storey building and shaped like an elongated Aztec pyramid. Afterwards disembark at a local pier and take the short walk to the Grand Palace. Within its enormous grounds is the most exotic Buddhist temple and at the heart of the temple itself is the holiest and most revered religious object in Thailand – a Buddha image, carved from one piece of jade.

Booking ref	BKKRIV
Duration	3.5 hours
Date	21 or 22 June
Departure	8:30am
Suitable for	TTH7, TTH8, TTS11
Cost	£15 per person
Cost includes	Return air-conditioned coach transfers from your hotel, one way transfer by private boat, applicable admission fees, cold towel and bottled water on board coach and English speaking guide.

Please note For religious reasons ladies should have their shoulders covered and not wear shorts or short skirts. Gentlemen should wear trousers and short sleeved shirts. Shoes must be removed before entering the Emerald Buddha Temple.



Fiji

SEASPRAY DAY CRUISE

An early morning departure from your resort bound for Port Denarau Marina from where a launch transfers you to Mana Island and then a long boat carries you out to Seaspray. Leaving Mana Island lagoon, Seaspray cruises towards the outer Mamanuca Islands. Assist the crew in setting the sails or relax and enjoy a glass of bubbly. Pass the island resort of Matamanoa and the village island of Tavua before arriving at Yanuya, where you are welcomed with a traditional kava ceremony and then have time to browse through the shell market and village.

Re-board Seaspray for a short trip to Monu for lunch and whilst the chef cooks up a feast, jump into the water to cool off.

Next it's onto Modriki, the island on which Tom Hank's character was stranded for four years in 'Castaway'. Explore, sunbathe and enjoy the snorkelling.

Throughout the course of the day Seaspray's friendly Fijian crew will entertain and ensure a good time is had by all. Return to Mana and connect with the launch for the return trip to Port Denarau Marina.



Booking ref	NANSEA
Duration	Full day
Date	28 June, 6, 12 or 13 July
Departure	7:15am daily
Suitable for	Epic 6 TTH5, TTH18, TTH19, TTH25, TTS9 DTS1, DTS7
Cost	£79 per person
Cost includes	Return coach transfers from your hotel to Port Denarau Marina, return launch transfers, Seaspray cruise, morning and afternoon tea, lunch, drinks, village visit and snorkelling equipment. The bar on board offers a selection of local beers and imported wines.

Recommended A day bag with towel, swimsuit, reef walking shoes, hat, sunscreen and any medication or toiletries you may need. Bring small denomination Fijian currency for personal purchases. Whilst in the village please dress modestly in accordance with Fijian custom.

Hawaii

STAR OF HONOLULU DINNER CRUISE

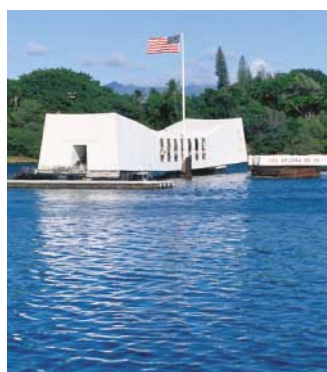
Enjoy a luxurious and memorable sunset cruise on the Star of Honolulu, one of the most elegant ships in Hawaiian waters. You will be greeted on the gangway by cheerful hula dancers and treated to a cocktail. As the ship sails gently along the Waikiki coast, you are treated to panoramic views of the sunset and a marvellous five course dinner including Maine lobster and filet mignon steak. After dinner, stroll the decks at your leisure and sip a cocktail while enjoying the on-deck entertainment or revelling in the breathtaking views visible from the Observation Deck. Returning to dock, the lights of Honolulu are spectacular.

Booking ref	HNLSTA
Duration	4 hours
Date	13 July
Departure	4:30pm
Suitable for	TTH9, TTH13, TTS12
Cost	£79 per person
Cost includes	Return coach transfer from your hotel, five course dinner and two drinks.



Pearl Harbor

Clearly no trip to Hawaii is complete without a visit to Pearl Harbor. This is easily arranged once you are there and the film show at the visitor centre and boat trip out to the Arizona Memorial are free. Your tour manager will be happy to assist if required.



Hong Kong

HONG KONG ISLAND TOUR



The first stop of this tour takes you to Victoria Peak, which rises 544 metres above sea-level and offers a spectacular view of the hustle and bustle of this extraordinary city. From the Peak, you proceed downhill along the coastal road to Repulse Bay, a seaside resort and one of Hong Kong's most popular beaches. Just around the corner is Stanley Market where silk designer clothing, hand-painted porcelain and souvenir items overflow from the shops onto the narrow lanes. Shopping at Stanley Market is always fun and there are many bargains to be found. The final stop on the tour is Aberdeen where traditional Chinese values and ancient customs are easily observed. Once a small fishing village, Aberdeen is now a thriving town best known for its plethora of junks, houseboats and floating restaurants.



Booking ref	HKGISL
Duration	Half day, 5 hours
Date	21 or 22 June
Departure	8:30am daily
Suitable for	TTS5, TTH11, TTH24
Cost	£25 per person
Cost includes	Return transfers from your hotel and English speaking guide.



Rarotonga

AITUTAKI DAY TRIP



The magnificent and remote island of Aitutaki is a triangular-shaped atoll rising 4000 metres from the floor of the Pacific Ocean. It consists of three volcanic and 12 coral islets and is 200 kilometres north of Rarotonga which translates to a 40 minute flight.

You will be picked up from your hotel in the morning and then flown to the island. This memorable day includes a cruise on the island's breathtakingly beautiful lagoon and lunch. The crystal clear waters of the lagoon, the colourful fish and the fine white sands all add up to an experience which is a treat for anyone tired of the hustle and bustle.

Booking ref	RARAIT
Duration	Full day, 9 hours
Date	11 July
Departure	7:30am
Suitable for	TTH15
Cost	£155 per person
Cost includes	Return airport transfers, return flights to Aitutaki, lunch and use of snorkelling gear.
Recommended	Bring light change of clothes for after the cruise and a hat, sunscreen and camera.

Singapore

TRISHAW & SINGAPORE SLING TOUR



This nostalgic tour of old Singapore begins with a visit to the infamous Raffles Hotel for a tour of the grounds and, of course, to sample a "Singapore Sling". Next stop is Bugis Village and then take a stroll at the night market to hunt for bargains.

You then hop onto a trishaw (three wheeled bicycle with a sidecar). The trishaws move off in a row, like a dragon snaking along Arab Street, Little India and ending at Clark Quay, a popular riverside landmark in Singapore. Featuring five blocks of restored warehouses, Clark Quay is the home to hip entertainment, dining outlets and shops of all kinds selling second-hand goods, antiques, silk wear and accessories. The Clark Quay Satay Club with its variety of satay and barbecued seafood should not be missed. After dinner transfer back to your hotel or make your own way back if you prefer to stay on and enjoy the nightlife.

Booking ref	SINTRI
Duration	5 hours
Date	01, 21, or 22 June or 12 July
Departure	5:00pm
Suitable for	Epic 6 TTS3, TTH22, TTH23
Cost	£39 per person
Cost includes	Transfers, Singapore Sling, trishaw ride, taxes and services of an English speaking guide.
Please note	Meals are NOT included.

Seoul



DMZ/PANMUNJOM TOUR



This tour takes you 1.5 hours north of Seoul to the Demilitarised Zone (DMZ) of Panmunjom where the armistice was signed in 1953 ending the three year long Korean War. Since then it has been the scene of on and off dialogue between the South and the communist North. Lunch is provided along with a slide presentation at the camp. You are escorted safely by a military tour guide

around the south half of the village to Freedom House for a view of North Korea.

Booking ref	SELDMZ
Duration	Full day, 9 hours
Date	22 June or 12 July
Departure	9:00 am daily
Cost	£55 per person
Cost includes	Coach transfers, lunch and English speaking military tour guide.

SEOUL CITY TOUR KOREAN FOLK VILLAGE AND ICHEON CERAMIC FACTORY TOUR



There is plenty more of interest in Seoul and if you are spending time here then you should take the opportunity to explore the city and to visit the Folk Village and Icheon Ceramic Factory.

City Tour

A city tour includes: the Changdokkung Palace and Secret Garden, Seoul's most popular tourist site; the state of the art World Cup Stadium and the Namdaemum Market which attracts locals and tourists alike for its bargains from everything to clothes to flowers to food.

A half day tour costs £35 per person on a regular bus tour or £75 per person for a private tour.

A full day tour costs £50 per person on a regular bus tour or £109 per person for a private tour; price includes lunch at a local restaurant. All options include an English speaking guide.

Korea Folk Village and Icheon Ceramic Factory

A day of culture at the Korea Folk Village, 40kms south of Seoul. The village is modelled on the old traditional way of life and you see the ancient art of utensil and tool making in action. Sample the spices and flavours of traditional Korean cuisine at lunch in the village restaurant. After lunch visit the famous Icheon Ceramic Factory where skilful artists create designs using traditional methods.

This is a full day tour which costs £50 per person on a regular bus tour or £135 per person for a private tour including admission fees, lunch and English speaking guide.

To book either of these sightseeing options, please contact the Lions department on **01684 293175** or email **gullivers@gulliversports.co.uk**



Sydney

SYDNEY HARBOUR BRIDGE CLIMB

The exhilaration and personal satisfaction achieved by reaching the top of the Sydney Harbour Bridge are rewarded by the breathtaking view that lies before you. You get a real overall sense of Sydney from the harbour and Opera House, across to the coastline and right out to the Blue Mountains. Climbing in the day has a vibrant, bustling, energetic feel. In every direction you look you are bowled over by an awesome view of the world's most beautiful harbour. Nothing else in Sydney gives you this breathtaking perspective.

Booking ref	Day SYDBCED
Duration	3.5 hours
Date	12 July
Departure	10:00 am
Suitable for	TTS13 and DTS1
Cost	£65 per person
Please note	Remember to go easy the night before as you are breathalysed prior to your Climb and may not be allowed to climb. Make your own way to and from the Bridge Climb.

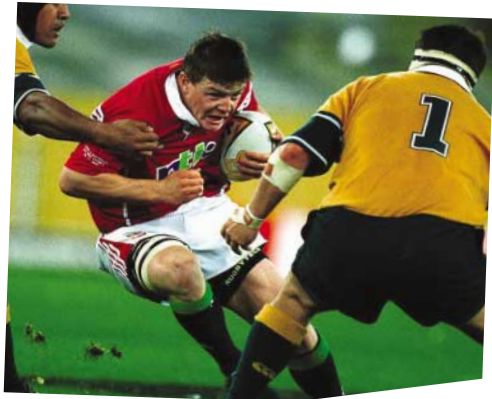


MAIN AND MIDDLE HARBOUR COFFEE CRUISE

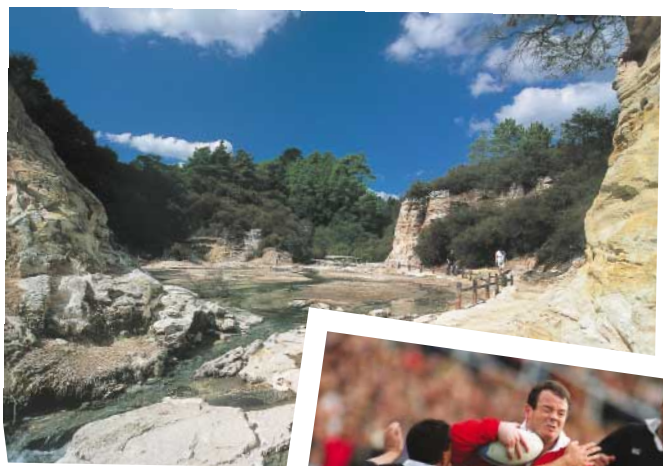
The most famous of all the Sydney Harbour sightseeing tours, this cruise shows you what public and private Sydney are really all about. You will cover the main harbour attractions such as the Opera House, the Harbour Bridge and Fort Denison before cruising along the magnificent upper reaches of Middle Harbour where palatial waterfront homes, parks, beaches and marinas show Sydney life at its best. The cruise includes a light morning or afternoon tea to enjoy while you are on the water.

Booking ref	SYDCAP
Duration	Half day, 2.5 hours
Date	11, 12 or 13 July
Departure	10:00am or 2:15pm
Suitable for	TTS13, DTS1
Cost	£19 per person
Cost includes	Light morning or afternoon tea and commentary.





Gullivers' team in Tewkesbury, left to right, Gwyneth, Jo, Susie, Sheena, Nic, Becky, Penny, Vicky, Cooch, John, Tracey, Caroline, Nicola, Lorna, Claire, Hazel, Geraldine, Sharon, Leigh. Absent: Mark, Andy.



Williments' team in Wellington, left to right, back: Tiffany, Duncan, Phil L. Front: Phil D, Alix, Paula.



Gullivers Sports Travel has thoroughly checked that all information contained in this brochure is correct at time of going to press (March 2005). Gullivers Sports Travel cannot be held responsible for any changes after this date and hereby disclaims any liability to any person for any loss or damage caused by errors or omissions.

Photos courtesy of Offside, tourist boards and suppliers.



Gullivers Sports Travel is fully licensed and bonded with ABTA, IATA and ATOL. The air holidays and flights shown are ATOL protected by the Civil Aviation Authority. Our ATOL number is ATOL 3720. Protection extends primarily to customers who book and pay in the UK.

Travel advice is available as follows:
Foreign Office Advice: www.foc.gov.uk/knowbeforeyougo
ABTA Information Line 0901 201 5050
(calls charged at 50p per minute).

Fiddington Manor Tewkesbury Glos GL20 7BJ
Tel **01684 293175** Fax **01684 297926**
www.gulliversports.co.uk
email gullivers@gulliversports.co.uk

ABTA V8321 ATOL 3720 IATA 91201670



GULLIVERS
Sports Travel